



# Educating For 'Life In All Its Fullness'

15<sup>th</sup> November 2024

Dear Families,

Last week and this week in our celebration assembly, we said well done to the following children, for making the extra effort to impress with their work, or their behaviour and attitude.

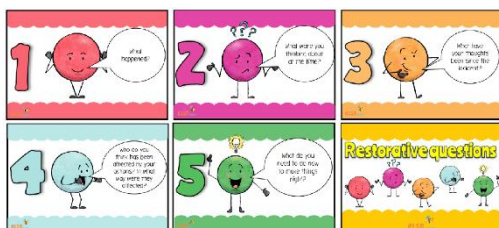
|   |
|---|
| <b><u>Class 1</u></b>   |
| <b><u>Excellent Early Learners</u></b><br>Charlie H, Reejh G, Lawrence F, Simone O. |
| <b><u>Class 2</u></b>   |
| Wonderful Work: Jason B, Hussayn A.<br>Brilliant Behaviour: Gigi T, Arthur H.       |
| <b><u>Class 3</u></b>   |
| Wonderful Work: Kitty A, Pippa S.<br>Brilliant Behaviour: Rory B, Noah A.           |
| <b><u>Class 4</u></b>   |
| Wonderful Work: Elana H, Otilie M.<br>Brilliant Behaviour: Aryana F, Katie B.       |

This week in school we have been spending time on the topic of 'Compassion'. This has linked into activities for Remembrance and also Anti-Bullying Week.

Last Friday Class 1 visited the Harewood War Memorial and placed a wreath they had made with others in preparation for the Harewood Village act of Remembrance last Sunday. We started this week with a collective worship thinking about Remembrance, both in terms of remembering and learning from the past, but also about conflict resolution. Classes then held a time of quiet and reflection at 11am as is the tradition.



During the week classes have also taken part in a number of activities linked to Anti-Bullying Week. This year the theme is 'Choose Respect' with the idea of respecting celebrating differences that we all have. To raise awareness of this we had an odd socks day on Tuesday and our MindMate Ambassadors have been working with other children to find ways to celebrate differences and avoid conflict.



Part of our work on behaviour in school is to be reflective about the impact our actions have on others. This week we have been refreshing the children's knowledge of Restorative Practice. This is a series of steps which we put in place to reflect on incidents, to resolve conflicts and try to adapt future behaviours.



## Football

Last Tuesday a team from Harewood took part in A Wharfe Valley Learning Partnership tournament. Eight teams of mixed girl/boy, Y5/6 were entered and during the afternoon our team played 9 matches. After a rocky start with scores going against us, the team did themselves proud with some impressive victories including a 4-0.

The team reached a playoff final, but unfortunately lost 1-0, so narrowly missed out on a trophy.



## School Building Work

If you have been into school since half term, you may have noticed a different 'feel' to the building. Over the half term break all the lighting in school has been changed to LED based systems. This has made it brighter in school, but also will have made us far more energy efficient. This upgrade was made possible with funding from a DfE energy saving grant and a top up from the local Emmerdale Fund. The grant and generosity of the Emmerdale fund have meant that this upgrade has come at no cost to school, but will have made a massive difference to our energy use and carbon footprint. It will potentially save school a few thousand pounds per year in energy costs as well as improving the working environment for the children and our global environmental impact.

In addition to this the Leeds buildings department have nearly completed a boiler replacement for school. This was started over the summer, but delays mean that we are currently in the final stages of completing the work. Again, this should improve our energy efficiency and also should be more reliable than the old boiler which regularly needed the attention of an engineer.

As well as improving the environment for the children, these works should save school quite a bit of money which is very welcome in the current times of very tight budgets.

## Frosty Fest Update

Thank you so much for the support and donations of sweets and goodies last week. Please save the date of 6th December and join us from 3:15-4:15 for festive games, Christmas crafts and stalls including snacks, preloved items, lucky bags and secret Santa gifts. We are collecting any donations of used toys, books, games, Christmas jumpers and PJs and also any new items for raffle prizes from next week onwards. Mrs Flowerdew will be setting up an option on Parent Mail to buy tokens in £5 bundles if you prefer a cashless option. Otherwise it will be a cash with an option to change notes for tokens. Thank you for supporting School Council's first fabulous festive fundraiser...Frosty Fest! (All proceeds will go towards funding resources that have been chosen as a priority by the children.)



Many thanks,  
Mrs Dodd and the School Council

## Eco-News

The Eco-committee has worked hard to carry out an environmental review in our school and has chosen the 3 topics we'll focus our work on: **Energy**, **Biodiversity** and **Global Citizenship**. We've also started completing the new Eco-application 2024 - 2025 and secured already a discount on the application fees. Thank you, Eco-Committee, for being so efficient!



## Cut Your Carbon

Last Thursday, during Collective Worship, the Eco-Committee invited the whole school to join us in the Eco-Schools' national campaign "Cut Your Carbon". To take part, children will complete as many cutting-carbon activities as they can from the checklist received in school. There are only 6 tasks and children have the whole month of November to complete them. Checklists with any completed tasks will need to be returned to the Eco-Committee who will submit the results.

As a thank you, every school or nursery that submits results will be entered into a prize draw to win a mural for their school by a talented artist. Two winners will be chosen!

Thank you so much for your support!  
Mrs Wright and the Eco-Committee



## PTA News

We are very excited to introduce our very own Harewoodlicious wonder bar sale! Will you find a golden ticket? There are many prizes for the lucky winners!

Our large chocolate bars are now available until the 22nd of November, get them from the PTA website: <https://www.pta-events.co.uk/harewoodpta/>

You can buy bars for siblings too, please put them under the name of one of your children attending school. There are no restrictions on the number you purchase, so the more you buy, the more chance you have of winning.

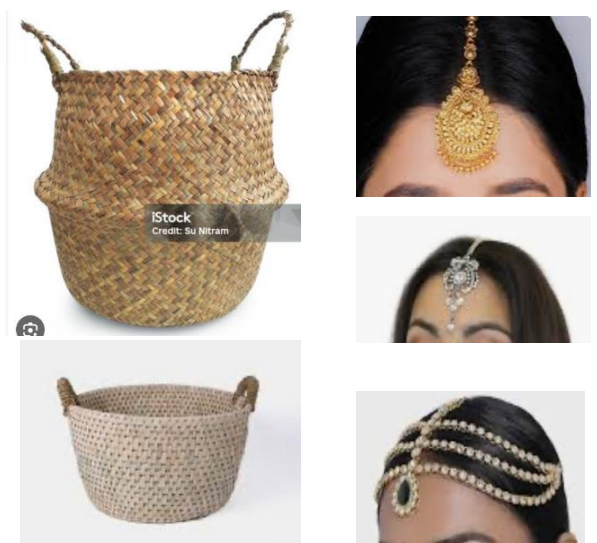
Thank you! Your PTA



## Class 2 Performance Request

We need some help with props for the Class 2's production. Would anyone have the following items that we could have/borrow for our production of Aladdin please.

- Varies sizes of baskets (example below)
- Bindi's
- Tikha head sets
- Asian/middle eastern scarfs
- Children's gold bangles.



Thank you – Mrs Reynolds



## Punctuality

I know the traffic into Harewood on a morning can be rather variable and very busy on some days, but please can we remind everyone about the importance of arriving at school on time every day. There will be odd occasions when something happens and we understand this, but quite a few children are arriving late on a regular basis.

A child arriving late for school has a disrupted start to the day. Classes try very hard to ensure routines are setup to aid the children with knowing what to do, when to do it and give them the emotional support that normality brings. If a child is late, they end up having to rush into class, find out what they are expected to do and try to settle into the day without any of this. The result of this is often anxiety or dysregulation which affects the child and their peers. First thing on a morning is also the time where the adults check in with the children, the children choose lunch choices and often this is a time for additional interventions for learning. Again this is missed if a child is late.

The school gates open at 8.40am and close at 8.50am (If I know traffic is bad, then this time is often extended to allow additional time). Once the gates are closed, children will need to enter school via the school office and be signed in by parents.

## Updating Contact Details Reminder

We have recently sent out a number of communications to families which have not got through to everyone. This has been a combination of us having old email addresses or family email addresses not working as they should. Please ensure that school has email addresses which are up to date and working.

The best way of notifying school of changes is via email to [office@harewood.leeds.sch.uk](mailto:office@harewood.leeds.sch.uk).

## Wellbeing Quote for the Month

This month in Collective worship we are thinking about being compassionate. Caring for each other and kind acts make a big difference to those around us.



## Collective Worship Music - I Vow to Thee My Country – The Bands of HM Royal Marines

'I Vow to Thee, My Country' is a popular British hymn, created in 1918 when a poem by Sir Cecil Rice was set to music by Gustav Holst, a British composer. The poem is set to an extended version of 'Jupiter' from Holst's Planets Suite.

First performed in 1921, it is strongly associated with Remembrance Day, being performed at services across the UK and the rest of the Commonwealth.

This version is performed by members of the Band of HM Royal Marines. The Royal Marines Band is the musical wing of the Royal Navy. Music has always played an important part in all our British Armed Forces and this hymn is very important to everyone involved in the Forces. The very first line 'I Vow to Thee my Country' sums up their whole life.

Remembrance Day honours those who have served or currently serve to defend our country. It is a time for us to unite across faiths, cultures and backgrounds to remember their sacrifices and also those of their families. The red poppy is a sign of Remembrance but also a sign of hope for a peaceful future.

YouTube link - <https://www.youtube.com/watch?v=GZNJFrb0IGo>



## Dates for this Half Term

| Date                                | Event  |
|-------------------------------------|--|
| Tuesday 19 <sup>th</sup> November   | Class 3 Trip – Murton Park                           |
| WB 25 <sup>th</sup> November        | Collecting items for the School Council Frosty Fest. |
| Friday 29 <sup>th</sup> November    | Whole school Nativity Trip                           |
| Wednesday 4 <sup>th</sup> December  | MindMate Workshops                                   |
| Friday 6 <sup>th</sup> December     | Reception Trip to Harewood House                     |
| Friday 6 <sup>th</sup> December     | School Council 'Frosty Fest'                         |
| Tuesday 10 <sup>th</sup> December   | Class 2 Productions (2pm and 6pm)                    |
| Friday 13 <sup>th</sup> December    | Class 3 Trip to Harewood House                       |
| Monday 16 <sup>th</sup> December    | Class 2 Trip to Harewood House                       |
| Tuesday 17 <sup>th</sup> December   | Class 4 Trip to Harewood House                       |
| Wednesday 18 <sup>th</sup> December | Whole School Nativity Performances (AM and PM)       |
| Thursday 19 <sup>th</sup> December  | Christmas Dinner Day                                 |
| Friday 20 <sup>th</sup> December    | Last day of school before the Christmas break        |

Have a good weekend.

Mr Ratcliffe

